



# FOR LEASE

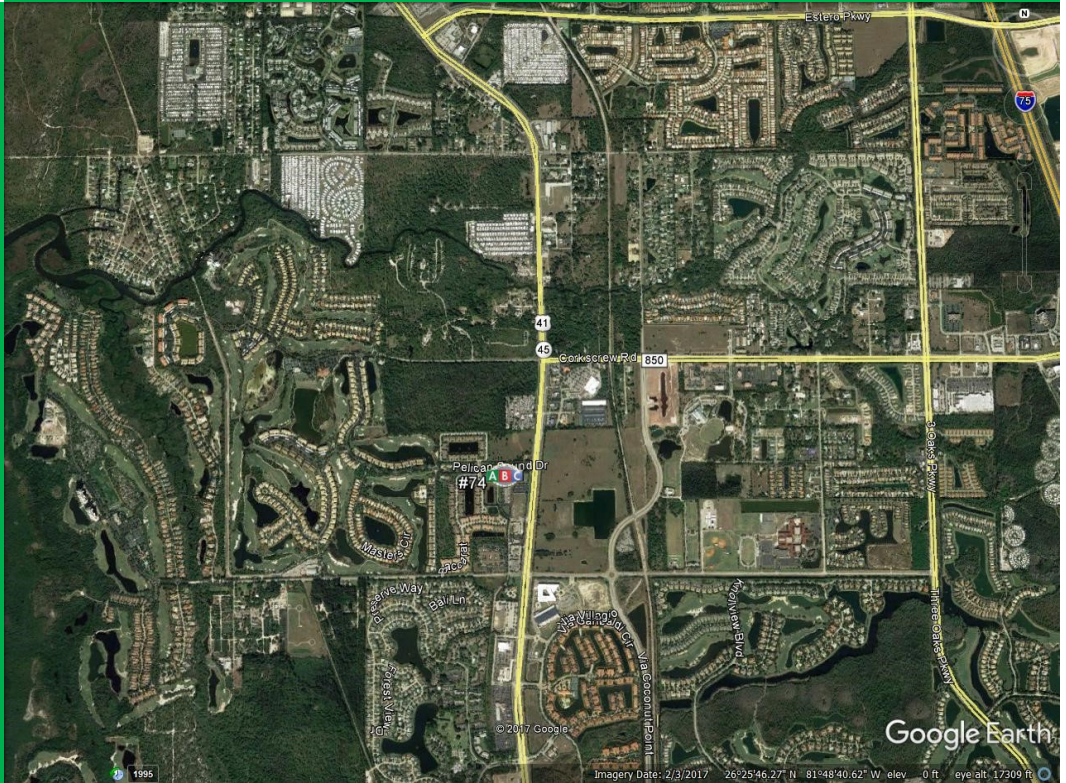
Lee County - 21720 South Tamiami Tr, Estero, FL 33928

## PROJECT INFORMATION

- US 41 just South of Corkscrew Rd.
- Asking \$15 PSF NNN
- 10,000 SQ. FT. +/- End Cap Condo Available
- 48,500 ADT on Tamiami Tr

## DEMOGRAPHICS

- Population
  - 1 mile - 4,200
  - 3 mile - 35,468
  - 5 mile - 74,745
- Avg. HH Income
  - 1 mile - \$103,567
  - 3 mile - \$ 94,635
  - 5 mile - \$ 94,745



## FOR MORE INFORMATION CONTACT

**Chris Quarles**  
**407.858.1019**  
**CQ@abcfws.com**

ABC Fine Wine and Spirits  
 P.O Box 593688  
 Orlando, FL 32859  
 P:407.851.0000  
 P:407.857.0469  
 www.abcfws.com

